

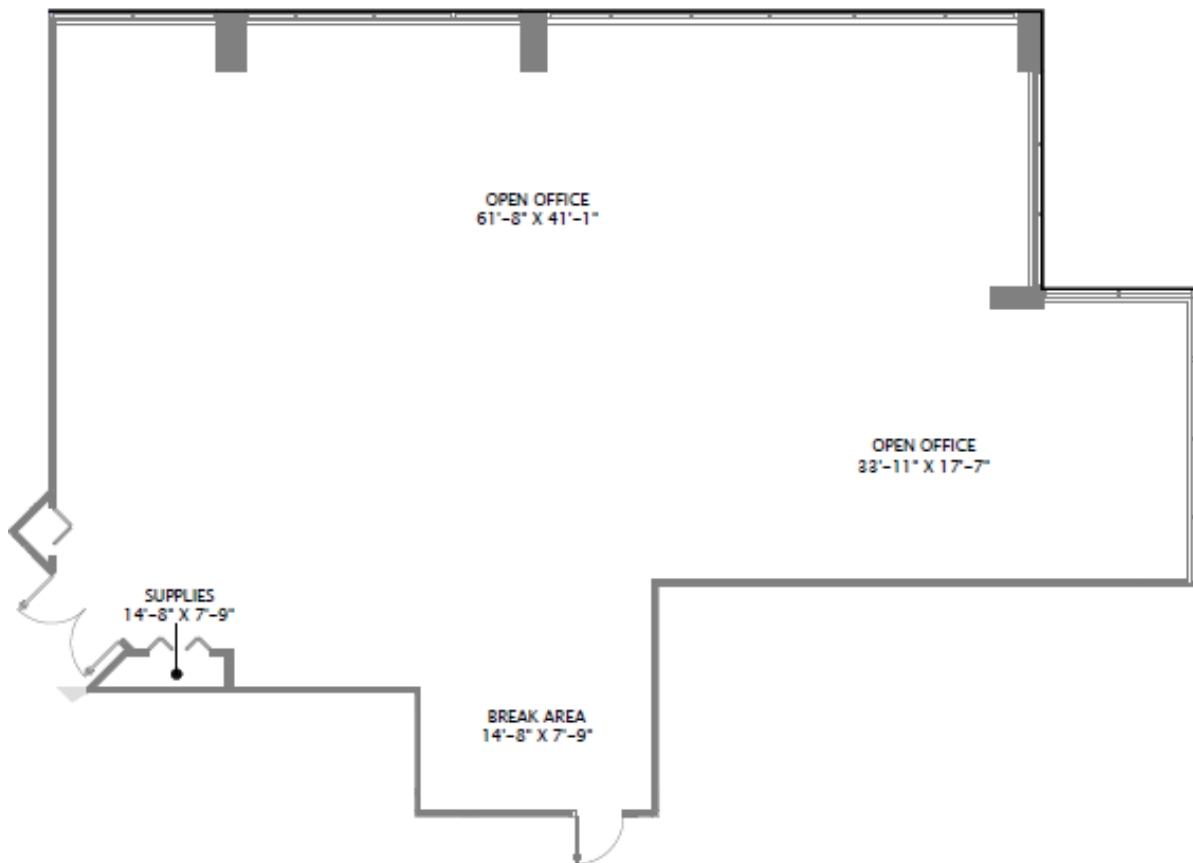


CENTRE

101 NE 3rd Avenue  
Fort Lauderdale, Florida 33301

## Tower 101 | Suite 1920

3,257 SF



For more information, please contact:

**JOHN K. CRIDDLE**  
Executive Director  
+1 954 377 0465  
john.criddle@cushwake.com

**JOSEPH J. FREITAS**  
Director  
+1 954 377 0462  
joe.freitas@cushwake.com



©2020 Cushman & Wakefield.  
The material in this presentation has been prepared solely for information purposes, and is strictly confidential. Any disclosure, use, copying or circulation of this presentation (or the information contained within it) is strictly prohibited, unless you have obtained Cushman & Wakefield's prior written consent. The views expressed in this presentation are the views of the author and do not necessarily reflect the views of Cushman & Wakefield. Neither this presentation nor any part of it shall form the basis of, or be relied upon in connection with any offer, or act as an inducement to enter into any contract or commitment whatsoever. NO REPRESENTATION OR WARRANTY IS GIVEN, EXPRESS OR IMPLIED, AS TO THE ACCURACY OF THE INFORMATION CONTAINED WITHIN THIS PRESENTATION, AND CUSHMAN & WAKEFIELD IS UNDER NO OBLIGATION TO SUBSEQUENTLY CORRECT IT IN THE EVENT OF ERRORS.

[tower101centre.com](http://tower101centre.com)